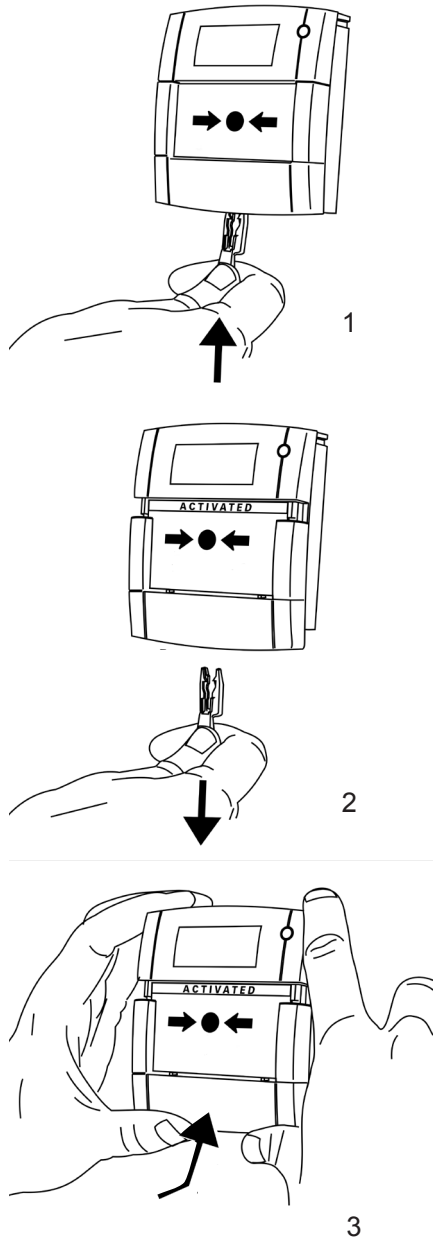
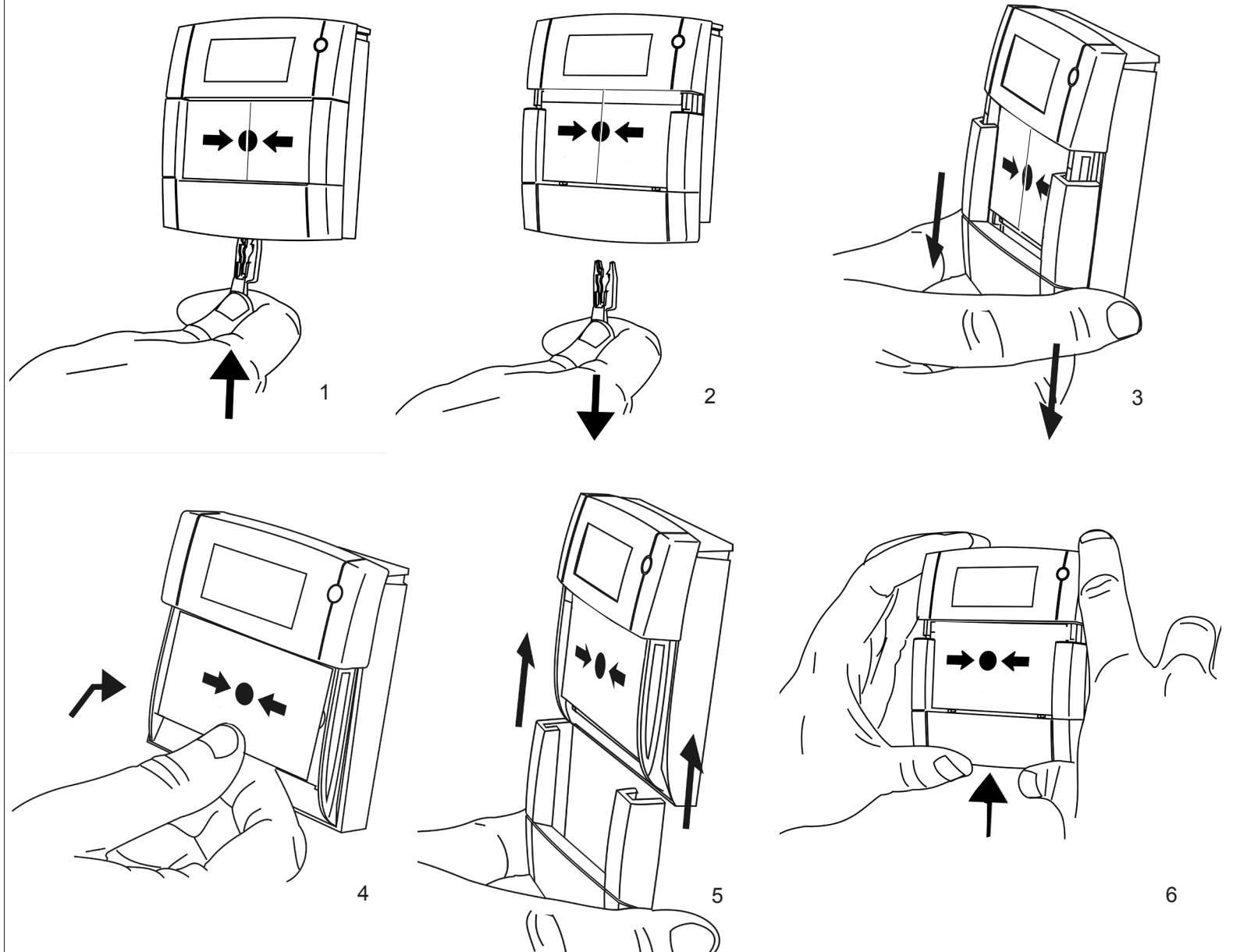


TO TEST & RESET



TO REPLACE GLASS / INTERCHANGE BETWEEN RESETTABLE AND GLASS ELEMENT

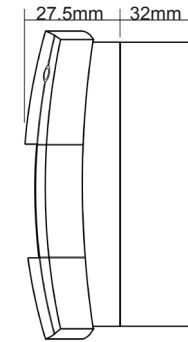
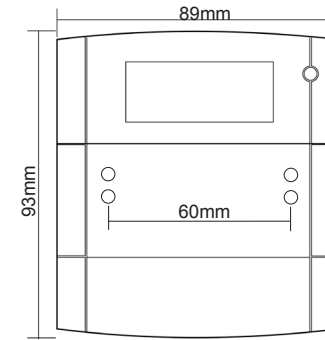


GEN T INSTALLATION INSTRUCTIONS FOR THE MANUAL CALL POINT MODELS XENS-800, XENS-801, XENS-805, XENS-842, XENS-850

by Honeywell

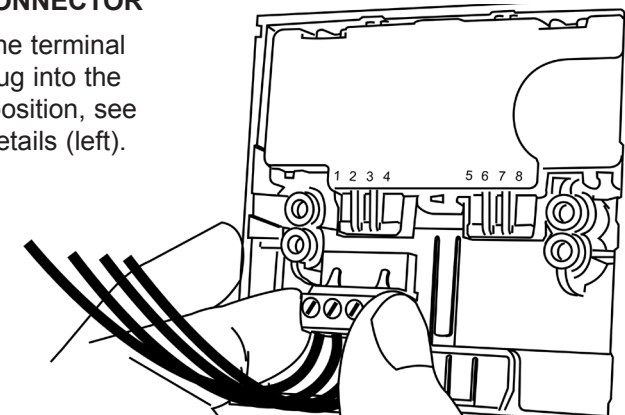
CONNECTION DETAILS	XENS-800, XENS-805 XENS-842, XENS-850	XENS-***	XENS-***	XENS-***
<p>OR</p>				

DIMENSIONS



PUSH FIT CONNECTOR

After wiring the terminal connector, plug into the appropriate position, see connection details (left).



CONNECTION DETAILS	XENS-801
<p>OR</p>	<p>1 2</p> <p>3 4</p> <p>5 6</p> <p>7 8</p>

CONNECTION DETAILS	XENS-***
<p>AND</p> <p>OR</p> <p>AND</p>	
<p>AND</p>	

TECHNICAL DATA



30VDC Max



Red, Ral 3001
Yellow, Ral 1006
Green, Ral 6016
White, Ral 9010
Blue, Ral 5002



2A Max



IP24D



Important Notes; -
Please do not over tighten fixing screws.
The use of lubricants, cleaning solvents or petroleum based products should be avoided.



110/160g



-10°C to 55°C